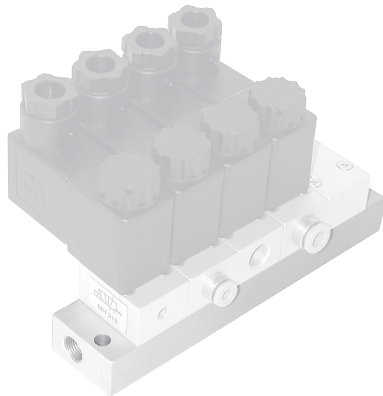


# 2.6

## Manifold Plates

# R \_ \_



Common connection to port 1 (pressure).

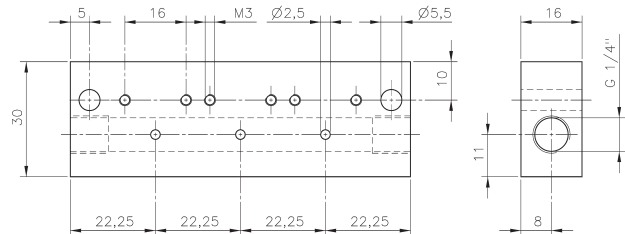
The following valves can be assembled to the manifold plate type R \_ \_:

- MH 312 port 2: M5
- MH 314 port 2: pif 4 mm
- MH 315 port 2: G 1/8"
- MH 316 port 2: pif 6 mm

All the valves are displayed on page 2.5.1.2.2.

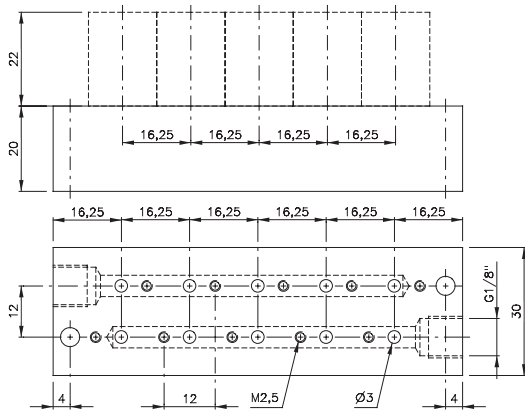
Blanking plates are also available type BP 3.

*All the manifold plates offered by Hafner-Pneumatik can be equipped with the DIN-rail mounting clips.*

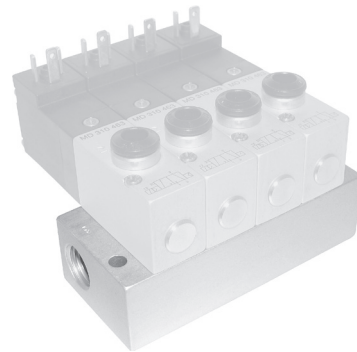


# R \_ \_

Stations	Type	Weight	Available
1	R 01	0,05 kg	from stock
2	R 02	0,08 kg	from stock
3	R 03	0,11 kg	from stock
4	R 04	0,13 kg	from stock
5	R 05	0,16 kg	from stock
6	R 06	0,19 kg	from stock
7	R 07	0,21 kg	from stock
8	R 08	0,24 kg	from stock
9	R 09	0,27 kg	from stock
10	R 10	0,30 kg	from stock
11	R 11	0,32 kg	from stock
12	R 12	0,35 kg	from stock
13	R 13	0,38 kg	from stock
14	R 14	0,41 kg	from stock
15	R 15	0,44 kg	from stock
16	R 16	0,47 kg	from stock



**RD 3\_\_ 303**



Common connection to port 1 (pressure) and 3 (exhaust).

The following valves can be assembled to the manifold plate type **RD 3\_\_ 303**:

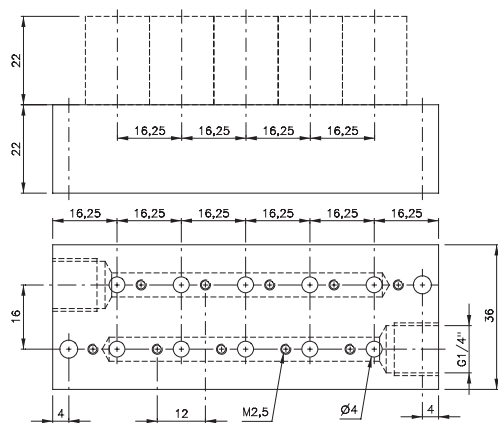
3/2-way n.c.	pif 4 mm	MD 310 343	page 2.5.1.2.4
3/2-way n.o.	pif 4 mm	MOD 310 343	page 2.5.1.2.4

Blanking plates are also available type BP 3 303.

The following valves can be assembled to the manifold plate type **RD 3\_\_ 403**:

3/2-way n.c.	G 1/8"	MD 310 403	page 2.5.1.2.4
3/2-way n.o.	G 1/8"	MOD 310 403	page 2.5.1.2.4
3/2-way n.c.	pif 6 mm	MD 310 463	page 2.5.1.2.4
3/2-way n.o.	pif 6 mm	MOD 310 463	page 2.5.1.2.4

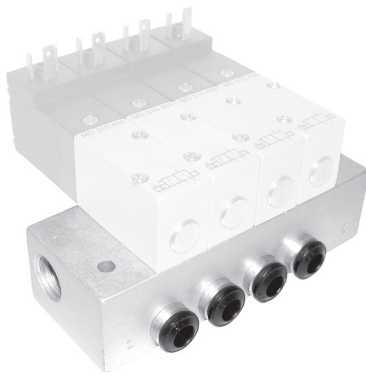
Blanking plates are also available type BP 3 403.



**RD 3\_\_ 403**

Stations	Type	Weight	Available	Type	Weight	Available
2	RD 302 303	0,07 kg	from stock	RD 302 403	0,09 kg	from stock
3	RD 303 303	0,10 kg	from stock	RD 303 403	0,13 kg	from stock
4	RD 304 303	0,13 kg	from stock	RD 304 403	0,16 kg	from stock
5	RD 305 303	0,15 kg	from stock	RD 305 403	0,19 kg	from stock
6	RD 306 303	0,18 kg	from stock	RD 306 403	0,23 kg	from stock
7	RD 307 303	0,21 kg	on request	RD 307 403	0,27 kg	on request
8	RD 308 303	0,23 kg	from stock	RD 308 403	0,30 kg	from stock
9	RD 309 303	0,26 kg	on request	RD 309 403	0,33 kg	on request
10	RD 310 303	0,28 kg	from stock	RD 310 403	0,36 kg	from stock
12	RD 312 303	0,33 kg	from stock	RD 312 403	0,43 kg	from stock
14	RD 314 303	0,38 kg	on request	RD 314 403	0,49 kg	on request
16	RD 316 303	0,43 kg	on request	RD 316 403	0,55 kg	on request

# RD 3\_\_ 344/RD 3\_\_ 464



Common connection to port 1 (pressure) and 3 (exhaust). The individual ports 2 are also in the manifold plate equipped with push-in fittings.

The following valves can be assembled to the manifold plate type **RD 3\_\_ 344** (pif 4 mm):

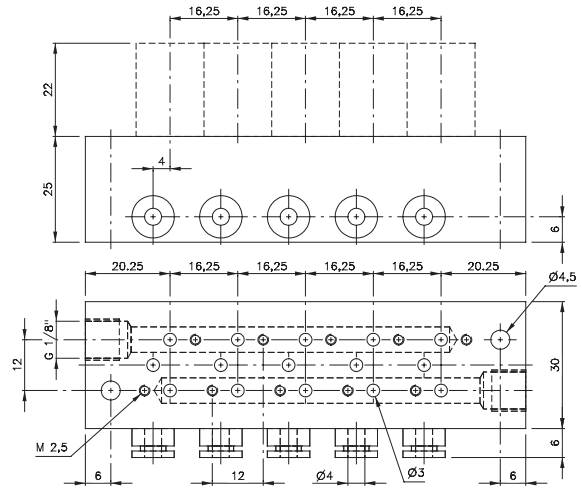
- 3/2-way n.c. MD 310 304 page 2.5.1.2.5
- 3/2-way n.o. MOD 310 304 page 2.5.1.2.5

Blanking plates are also available type BP 3 344.

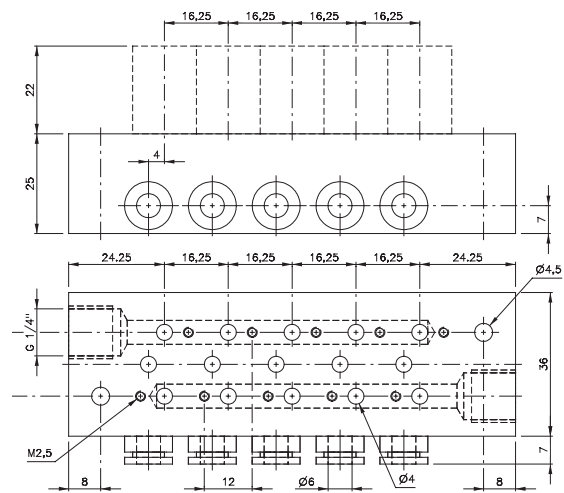
The following valves can be assembled to the manifold plate type **RD 3\_\_ 464** (pif 6 mm):

- 3/2-way n.c. MD 310 404 page 2.5.1.2.5
- 3/2-way n.o. MOD 310 404 page 2.5.1.2.5

Blanking plates are also available type BP 3 464.



**RD 3\_\_ 344**

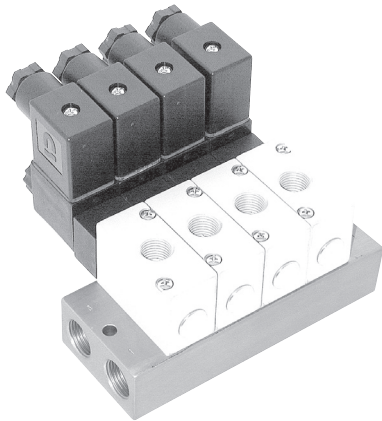


**RD 3\_\_ 464**

Stations	Type	Weight	Available	Type	Weight	Available
2	RD 302 344	0,13 kg	from stock	RD 302 464	0,15 kg	from stock
3	RD 303 344	0,16 kg	from stock	RD 303 464	0,19 kg	from stock
4	RD 304 344	0,19 kg	from stock	RD 304 464	0,23 kg	from stock
5	RD 305 344	0,22 kg	from stock	RD 305 464	0,26 kg	from stock
6	RD 306 344	0,25 kg	from stock	RD 306 464	0,30 kg	from stock
7	RD 307 344	0,28 kg	on request	RD 307 464	0,34 kg	on request
8	RD 308 344	0,31 kg	from stock	RD 308 464	0,38 kg	from stock
9	RD 309 344	0,34 kg	on request	RD 309 464	0,41 kg	on request
10	RD 310 344	0,38 kg	from stock	RD 310 464	0,49 kg	from stock
12	RD 312 344	0,44 kg	from stock	RD 312 464	0,53 kg	from stock
14	RD 314 344	0,50 kg	on request	RD 314 464	0,60 kg	from stock
16	RD 316 344	0,56 kg	on request	RD 316 464	0,68 kg	on request



# R 3\_\_ 703 G/R 3\_\_ 121 G



Common connection to port 1 (pressure) and 3 (exhaust).

The following valves can be assembled to the manifold plate type **R 3\_\_ 703 G**:

- Solenoid valves:
- |                       |        |               |                 |
|-----------------------|--------|---------------|-----------------|
| 3/2 single sol. n.c.  | G 1/4" | MH 310 701 G  | page 2.5.1.1.12 |
| 3/2 single sol. n.o.  | G 1/4" | MOH 310 701 G | page 2.5.1.1.12 |
| 3/2 double sol.       | G 1/4" | MH 320 701 G  | page 2.5.1.1.16 |
| 3/3-way centre closed | G 1/4" | MH 331 701 G  | page 2.5.1.3    |

- Pneumatically actuated 3/2-way valves:
- |              |        |             |              |
|--------------|--------|-------------|--------------|
| air spring   | G 1/4" | P 310 701 G | page 2.4.1.4 |
| mech. spring | G 1/4" | P 311 701 G | page 2.4.1.4 |
| double pilot | G 1/4" | P 320 701 G | page 2.4.1.6 |
| double pilot | G 1/4" | P 322 701 G | page 2.4.1.6 |

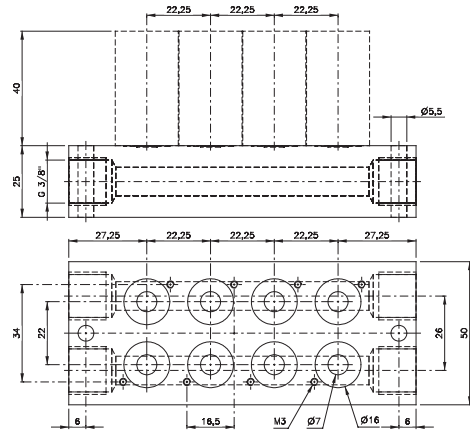
Blanking plates are also available type BP 3 703.

NPT-ported plates available on request.

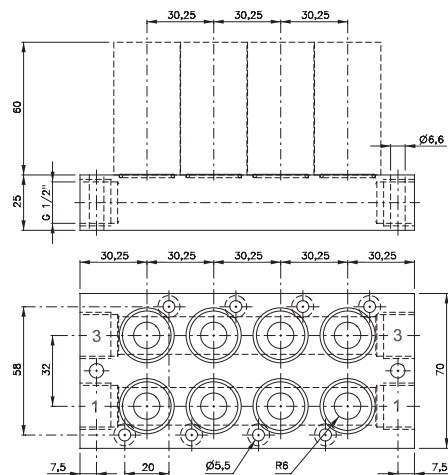
The following valves can be assembled to the manifold plate type **R 3\_\_ 121 G**:

- Solenoid valves:
- |                       |        |               |                 |
|-----------------------|--------|---------------|-----------------|
| 3/2 single sol. n.c.  | G 1/2" | MH 310 121 G  | page 2.5.1.1.13 |
| 3/2 single sol. n.o.  | G 1/2" | MOH 310 121 G | page 2.5.1.1.13 |
| 3/2 double sol.       | G 1/2" | MH 320 121 G  | page 2.5.1.1.16 |
| 3/3-way centre closed | G 1/2" | MH 331 121 G  | page 2.5.1.3    |

- Pneumatically actuated 3/2-way valves:
- |              |        |             |              |
|--------------|--------|-------------|--------------|
| air spring   | G 1/2" | P 310 121 G | page 2.4.1.4 |
| mech. spring | G 1/2" | P 311 121 G | page 2.4.1.4 |

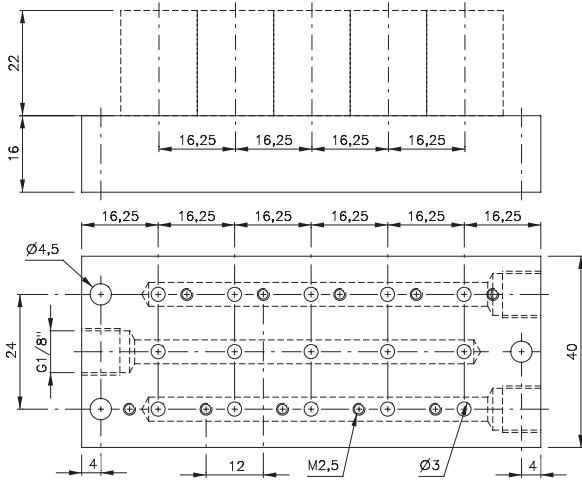


**R 3\_\_ 703 G**

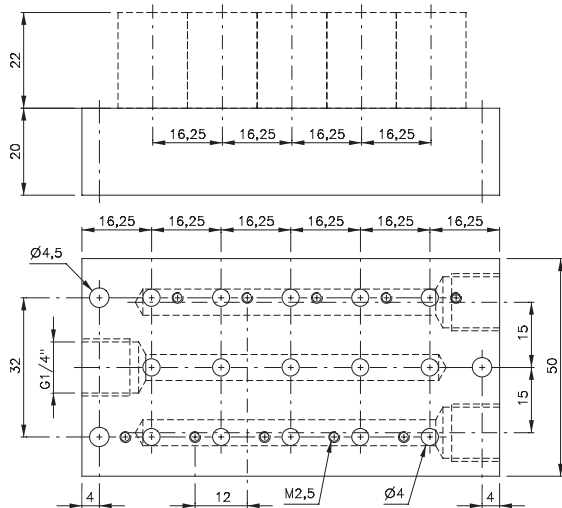


**R 3\_\_ 121 G**

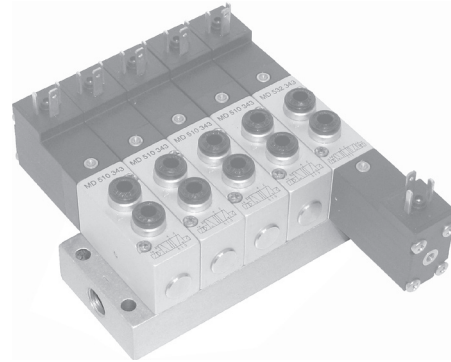
Stations	Type	Weight	Available	Type	Weight	Available
2	R 302 703 G	0,15 kg	from stock	R 302 121 G	0,28 kg	from stock
3	R 303 703 G	0,21 kg	from stock			
4	R 304 703 G	0,26 kg	from stock	R 304 121 G	0,48 kg	from stock
5	R 305 703 G	0,32 kg	from stock			
6	R 306 703 G	0,37 kg	from stock			
8	R 308 703 G	0,48 kg	from stock			
10	R 310 703 G	0,59 kg	from stock			
12	R 312 703 G	0,70 kg	from stock			



**RD 5\_\_ 303**



**RD 5\_\_ 403**



Common connection to port 1 (pressure), 3 and 5 (exhaust).

The following solenoid valves can be assembled to the manifold plate type **RD 5\_\_ 303**:

5/2 single sol.	M5	MD 510 303	page 2.5.2.2.1
5/2 single sol.	pif 4 mm	MD 510 343	page 2.5.2.2.1
5/2 double sol.	M5	MD 520 303	page 2.5.2.2.5
5/2 double sol.	pif 4 mm	MD 520 343	page 2.5.2.2.5
5/3-way	M5	MD 53_ 303	page 2.5.3.2.1
5/3-way	pif 4 mm	MD 53_ 343	page 2.5.3.2.1

Blanking plates are also available type BP 5 303.

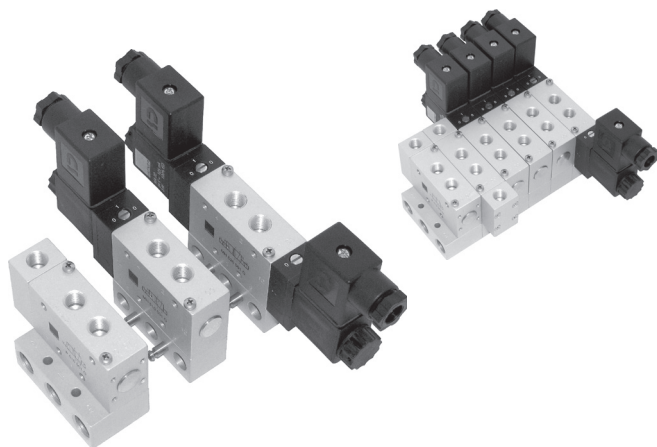
The following solenoid valves can be assembled to the manifold plate type **RD 5\_\_ 403**:

5/2 single sol.	G 1/8"	MD 510 403	page 2.5.2.2.1
5/2 single sol.	pif 6 mm	MD 510 463	page 2.5.2.2.1
5/2 double sol.	G 1/8"	MD 520 403	page 2.5.2.2.5
5/2 double sol.	pif 6 mm	MD 520 463	page 2.5.2.2.5
5/3-way	G 1/8"	MD 53_ 403	page 2.5.3.2.1
5/3-way	pif 6 mm	MD 53_ 463	page 2.5.3.2.1

Blanking plates are also available type BP 5 403.

Stations	Type	Weight	Available	Type	Weight	Available
2	RD 502 303	0,08 kg	from stock	RD 502 403	0,12 kg	from stock
3	RD 503 303	0,10 kg	from stock	RD 503 403	0,16 kg	from stock
4	RD 504 303	0,13 kg	from stock	RD 504 403	0,20 kg	from stock
5	RD 505 303	0,16 kg	from stock	RD 505 403	0,24 kg	from stock
6	RD 506 303	0,18 kg	from stock	RD 506 403	0,28 kg	from stock
7	RD 507 303	0,21 kg	on request	RD 507 403	0,32 kg	on request
8	RD 508 303	0,24 kg	from stock	RD 508 403	0,37 kg	from stock
9	RD 509 303	0,26 kg	on request	RD 509 403	0,41 kg	on request
10	RD 510 303	0,29 kg	from stock	RD 510 403	0,45 kg	from stock
12	RD 512 303	0,34 kg	from stock	RD 512 403	0,53 kg	from stock
14	RD 514 303	0,39 kg	on request	RD 514 403	0,62 kg	from stock
16	RD 516 303	0,44 kg	on request	RD 516 403	0,69 kg	from stock

# RB 5 \_\_ 503 G



Modular manifold system for common connections to ports 1 (pressure), 3 and 5 (exhaust). The system can be build and taken apart just by operating two hexagon socket screws. Additional stations can be added at any position and any time. End-plates are equipped with threads for adding DIN-rail mounting clips.

The following valves can be assembled to the system **RB 5 \_\_ 503 G**:

**Solenoid valves:**

5/2 single sol.	G 1/8"	MH 510 501 G	page 2.5.2.1.5
5/2 single sol.	G 1/8"	MH 510 503	page 2.5.2.2.2
5/2 double sol.	G 1/8"	MH 520 501 G	page 2.5.2.1.11
5/2 double sol.	G 1/8"	MH 520 503	page 2.5.2.2.6
5/3 solenoid	G 1/8"	MH 53_ 501 G	page 2.5.3.1.4
5/3 solenoid	G 1/8"	MH 53_ 503	page 2.5.3.2.2

**Pneumatically actuated valves:**

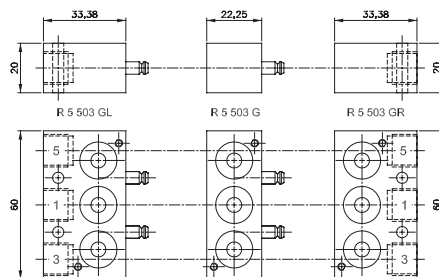
5/2 air spring	G 1/8"	P 510 501 G	page 2.4.2.4
5/2 mech. spring	G 1/8"	P 511 501 G	page 2.4.2.4
5/2 double pilot	G 1/8"	P 52_ 501 G	page 2.4.2.8
5/3	G 1/8"	P 53_ 501 G	page 2.4.3.3

The system consists of:

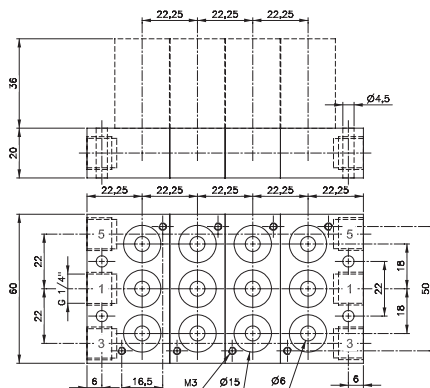
End-plate right	type R 5 503 GR
End-plate left	type R 5 503 GL
Individual position	type R 5 503 G

Blanking plates are also available type BP 5 503.

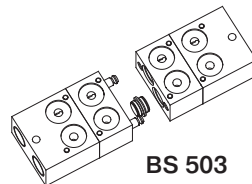
The plates can also be ordered assembled by the manufacturer. In this case order RB 5 \_\_ 503 G. Please add two digits for the number of positions required.



**Parts of modular manifold RB 5 \_\_ 503 G**



**RB 5 \_\_ 503 G**



**BS 503**

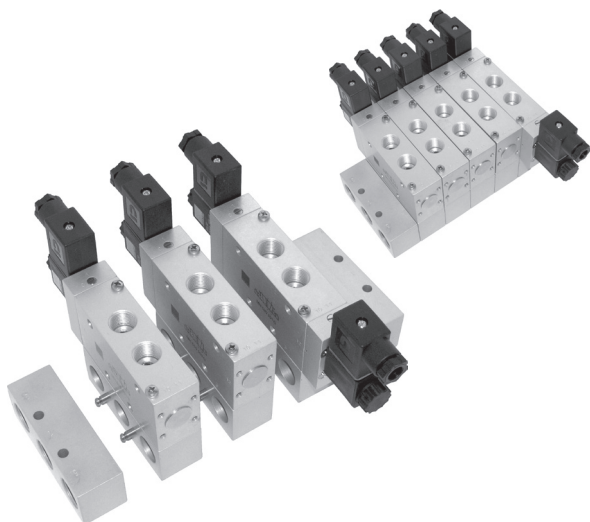
By adding a special plug (type BS 503), two different pressures can be attached at the same manifold plate. The plug is intercepting the air-supply in the manifold plate wherever the customer likes to.

Type	Function	Weight
R 5 503 GR	End-plate right	0,08 kg
R 5 503 GL	End-plate left	0,08 kg
R 5 503 G	Individual position	0,06 kg





# RB 5 \_\_ 103 G



Modular manifold system for common connections to ports 1 (pressure), 3 and 5 (exhaust). The system can be build and taken apart just by operating two hexagon socket screws. Additional stations can be added at any position and any time. End-plates are equipped with threads for adding DIN-rail mounting clips.

The following valves can be assembled to the system

**RB 5 \_\_ 103 G:**

- 5/2 single solenoid G 3/8" MH 510 101 G page 2.5.2.1.6
- 5/2 double solenoid G 3/8" MH 520 101 G page 2.5.2.1.12
- 5/3 solenoid G 3/8" MH 53\_ 101 G page 2.5.3.1.5

The system consists of:

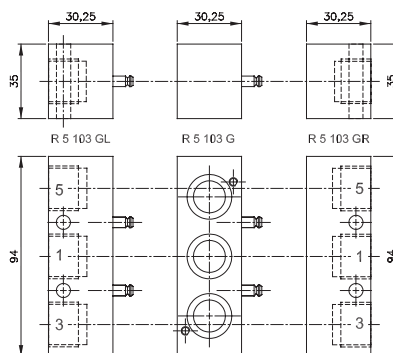
- End-plate right type R 5 103 GR
- End-plate left type R 5 103 GL
- Individual position type R 5 103 G

Blanking plates are also available type BP 5 103.

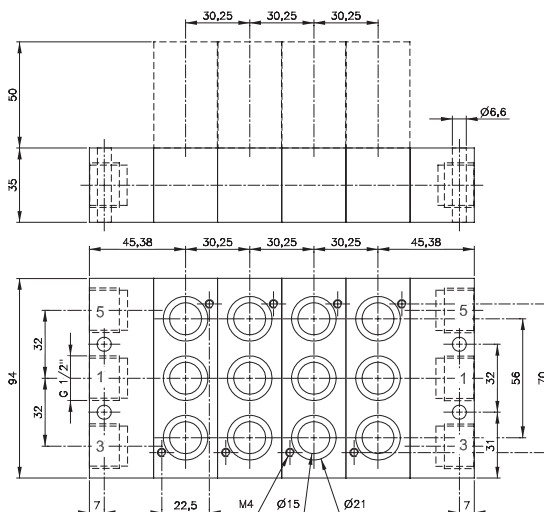
Attention:

End-plates are not offering an individual valve-position.

The plates can also be ordered assembled by the manufacturer. In this case order RB 5 \_\_ 103 G. Please add two digits for the number of positions required.

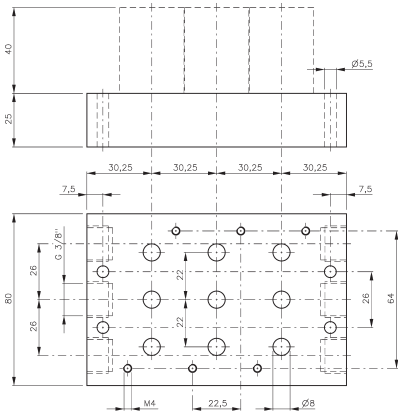
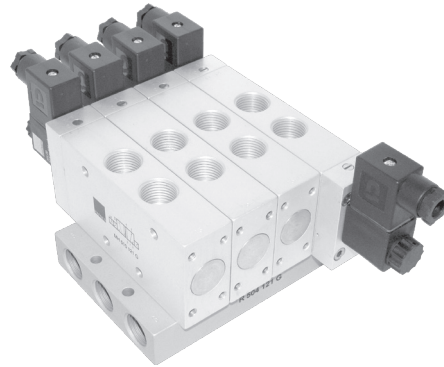


Parts of modular manifold RB 5 \_\_ 103 G



R 5 \_\_ 103 G

Type	Function	Weight
R 5 103 GR	End-plate right	0,20 kg
R 5 103 GL	End-plate left	0,21 kg
R 5 103 G	Individual position	0,18 kg



**R 5 \_\_ 803**

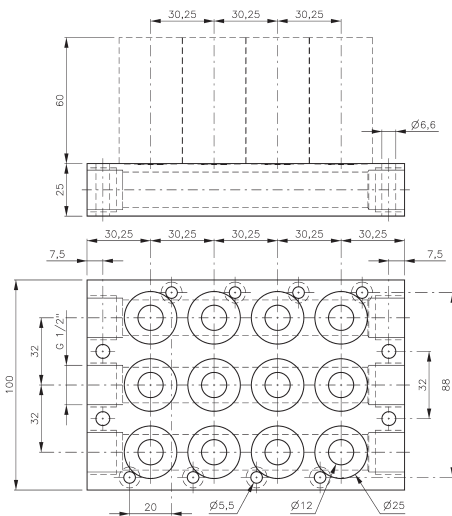
Common connection to port 1 (pressure), 3 and 5 (exhaust).

**R 5 \_\_ 803** for valves for manifold-plates only.

The following solenoid valves can be assembled to **R \_\_ 803**:

5/2 single sol.	G 1/4"	MH 510 803	page 2.5.2.2.2
5/2 double sol.	G 1/4"	MH 520 803	page 2.5.2.2.6
5/3- way	G 1/4"	MH 53_ 803	page 2.5.3.2.2

Blanking plates are also available type BP 5 803.



**R 5 \_\_ 121 G**

**R 5 \_\_ 121 G** for dual use valves.

The following valves can be assembled to **R 5 \_\_ 121 G**:

5/2 single sol.	G 1/2"	MH 510 121 G	page 2.5.2.1.6
5/2 double sol.	G 1/2"	MH 520 121 G	page 2.5.2.1.12
5/3 solenoid	G 1/2"	MH 53_ 121 G	page 2.5.3.1.5

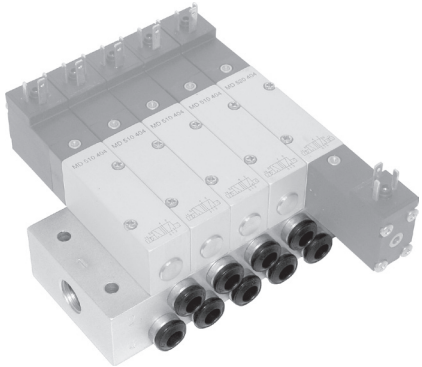
5/2 single pilot	G 1/2"	P 510 121 G	page 2.4.2.4
5/2 double pilot	G 1/2"	P 520 121 G	page 2.4.2.8
5/3 pneum.	G 1/2"	P 53_ 121 G	page 2.4.3.3

Blanking plates are also available type BP 5 121 G.

Plates can be equipped with DIN-rail mounting clips.

Stations	Type	Weight	Type	Weight
2	R 502 803	0,41 kg	R 502 121 G	0,41 kg
3	R 503 803	0,54 kg	R 503 121 G	0,56 kg
4	R 504 803	0,71 kg	R 504 121 G	0,70 kg
5	R 505 803	0,86 kg	R 505 121 G	0,85 kg
6	R 506 803	1,00 kg	R 506 121 G	0,99 kg
8	R 508 803	1,30 kg	n.a.	
10	R 510 803	1,61 kg	n.a.	
12	R 512 803	1,90 kg	n.a.	

# RD 5\_\_ 344/RD 5\_\_ 464



Common connection to port 1 (pressure), 3 and 5 (exhaust). The individual ports 2 and 4 are also in the manifold plate equipped with push-in fittings.

The following solenoid valves can be assembled to the manifold plate type **RD 5\_\_ 344** (pif 4 mm):

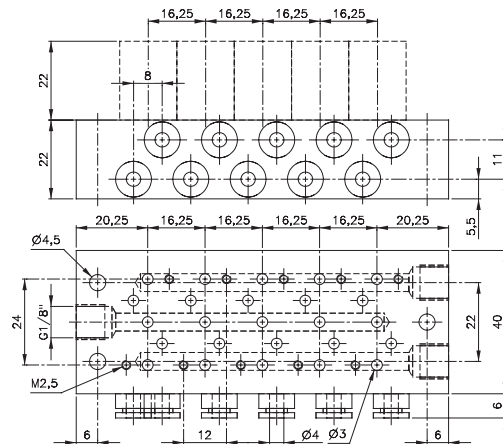
- 5/2 single sol. MD 510 304 page 2.5.2.2.3
- 5/2 double sol. MD 520 304 page 2.5.2.2.7
- 5/3-way MD 53\_304 page 2.5.3.2.3

Blanking plates are also available type BP 5 344.

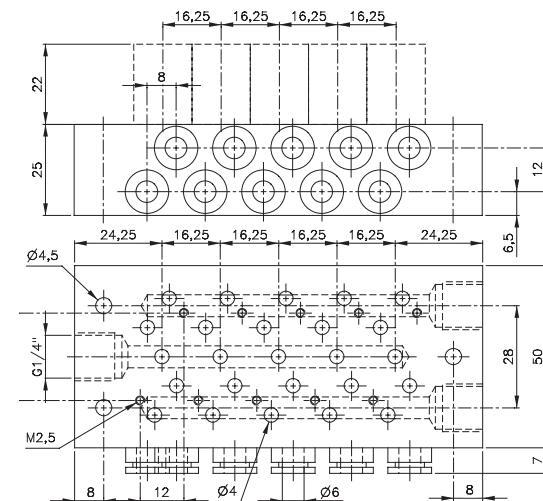
The following solenoid valves can be assembled to the manifold plate type **RD 5\_\_ 464** (pif 6 mm):

- 5/2 single sol. MD 510 404 page 2.5.2.2.3
- 5/2 double sol. MD 520 404 page 2.5.2.2.7
- 5/3-way MD 53\_404 page 2.5.3.2.3

Blanking plates are also available type BP 5 464.

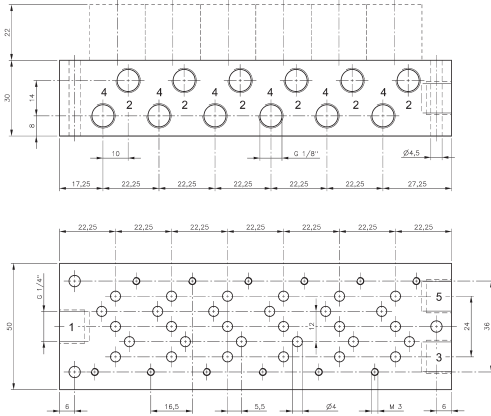


**RD 5\_\_ 344**

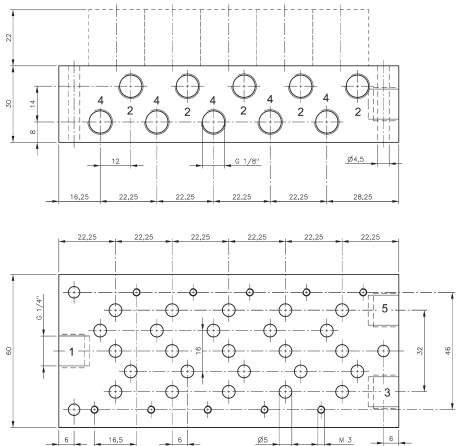


**RD 5\_\_ 464**

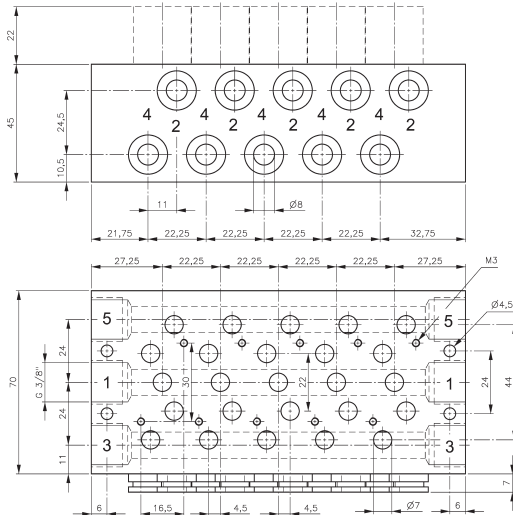
Stations	Type	Weight	Available	Type	Weight	Available
2	RD 502 344	0,14 kg	from stock	RD 502 464	0,21 kg	from stock
3	RD 503 344	0,18 kg	from stock	RD 503 464	0,27 kg	from stock
4	RD 504 344	0,22 kg	from stock	RD 504 464	0,33 kg	from stock
5	RD 505 344	0,26 kg	from stock	RD 505 464	0,38 kg	from stock
6	RD 506 344	0,30 kg	from stock	RD 506 464	0,44 kg	from stock
7	RD 507 344	0,34 kg	on request	RD 507 464	0,50 kg	from stock
8	RD 508 344	0,38 kg	from stock	RD 508 464	0,55 kg	from stock
9	RD 509 344	0,42 kg	on request	RD 509 464	0,60 kg	from stock
10	RD 510 344	0,46 kg	from stock	RD 510 464	0,66 kg	from stock
12	RD 512 344	0,54 kg	from stock	RD 512 464	0,77 kg	from stock
14	RD 514 344	0,62 kg	on request	RD 514 464	0,88 kg	on request
16	RD 516 344	0,70 kg	on request	RD 516 464	0,99 kg	on request



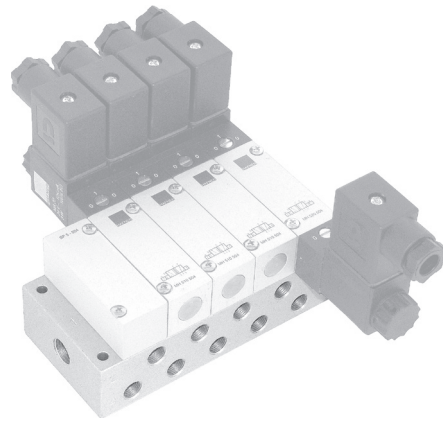
R 5 \_\_ 304



R 5 \_\_ 504



R 5 \_\_ 784



Common connection to port 1 (pressure), 3 (exhaust) and 5 (exhaust). The ports 2 and 4 of the individual valves are also located in the manifold plate.

The following solenoid valves can be assembled to the manifold plate type **R 5 \_\_ 304** (G 1/8" orifice 3 mm):  
5/2 single sol. MH 510 304 page 2.5.2.2.4  
5/2 double sol. MH 520 304 page 2.5.2.2.8  
5/3-way MH 53\_304 page 2.5.3.2.4

Blanking plates are also available type BP 5 304.

The following solenoid valves can be assembled to the manifold plate type **R 5 \_\_ 504** (G 1/8" orifice 5 mm):  
5/2 single sol. MH 510 504 page 2.5.2.2.4  
5/2 double sol. MH 520 504 page 2.5.2.2.8  
5/3-way MH 53\_504 page 2.5.3.2.4

Blanking plates are also available type BP 5 504.

The following solenoid valves can be assembled to the manifold plates type **R 5 \_\_ 704** (G 1/4" orifice 7 mm) and **R 5 \_\_ 784** (pif 8 mm):  
5/2 single sol. MH 510 704 page 2.5.2.2.4  
5/2 double sol. MH 520 704 page 2.5.2.2.8  
5/3-way MH 53\_704 page 2.5.3.2.4

**Manifold plates Type R 5 \_\_ 704 are not displayed. All dimensions are the same as R 5 \_\_ 784, only the pif 8 mm are replaced by threaded ports G 1/4".**

Blanking plates are also available type BP 5 704.

Stations	Type	Weight	Type	Weight	Type	Weight	Type	Weight
2	R 502 304	0,26 kg	R 502 504	0,30 kg	R 502 704	0,54 kg	R 502 784	0,54 kg
3	R 503 304	0,34 kg	R 503 504	0,40 kg	R 503 704	0,72 kg	R 503 784	0,72 kg
4	R 504 304	0,42 kg	R 504 504	0,50 kg	R 504 704	0,90 kg	R 504 784	0,90 kg
5	R 505 304	0,51 kg	R 505 504	0,60 kg	R 505 704	1,10 kg	R 505 784	1,10 kg
6	R 506 304	0,59 kg	R 506 504	0,70 kg	R 506 704	1,25 kg	R 506 784	1,25 kg
8	R 508 304	0,76 kg	R 508 504	0,89 kg	R 508 704	1,60 kg	R 508 784	1,60 kg
10	R 510 304	0,93 kg	R 510 504	1,08 kg	R 510 704	1,95 kg	R 510 784	1,95 kg
12	R 512 304	1,11 kg	R 512 504	1,29 kg	R 512 704	2,32 kg	R 512 784	2,32 kg

